

Crossing Borders with Colette's *Gigi*

by *Tama Lea Engelking*

[The following images accompany the article published in the *French Review* 93.3 (March 2020).]



Image 1: Colette in *La chair* (1908). Used with permission from Centre d'études Colette



Image 2: Poster for the 1949 film, directed by Jacqueline Audry. Used with permission from Centre d'études Colette



Image 3: Colette dressed as Claudine, posing with Willy. Used with permission from Centre d'études Colette

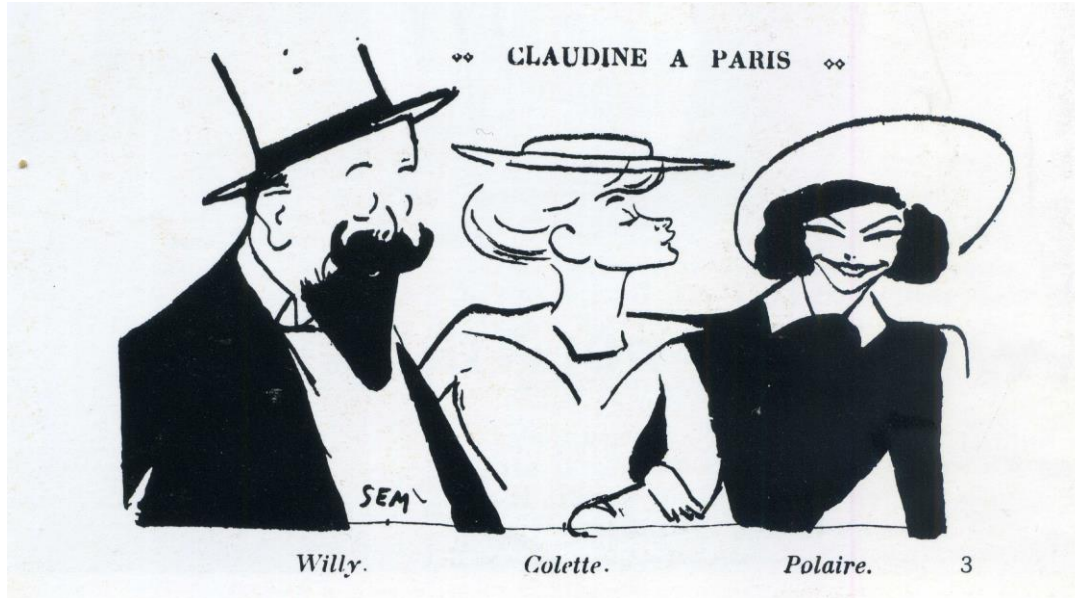


Image 4: Drawing by Sem, depicting the Willy, Colette, and Polaire “trio”



Image 5: Poster for the 1958 film, directed by Vincente Minnelli